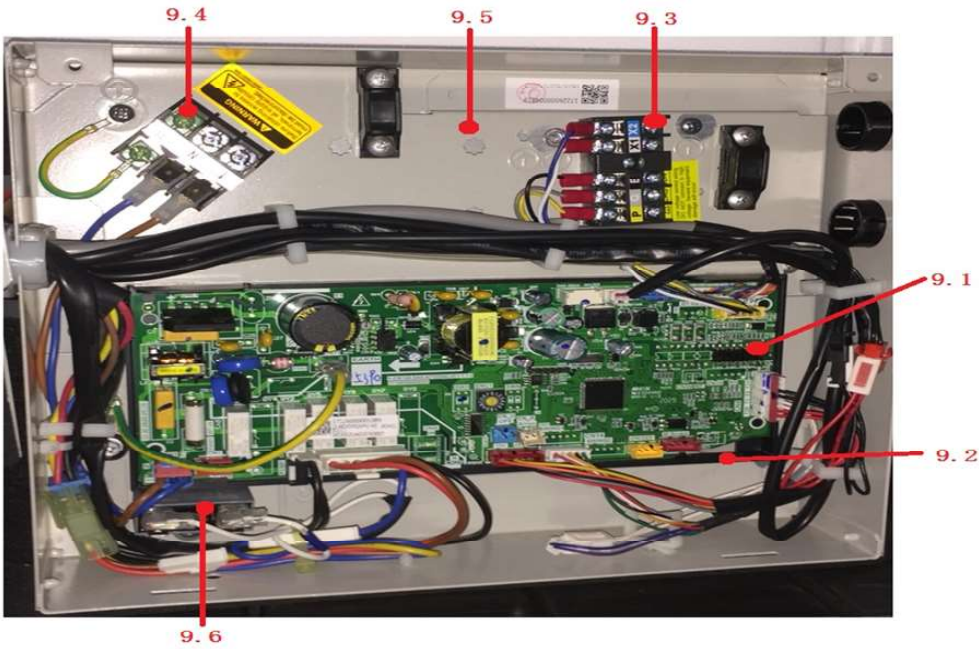
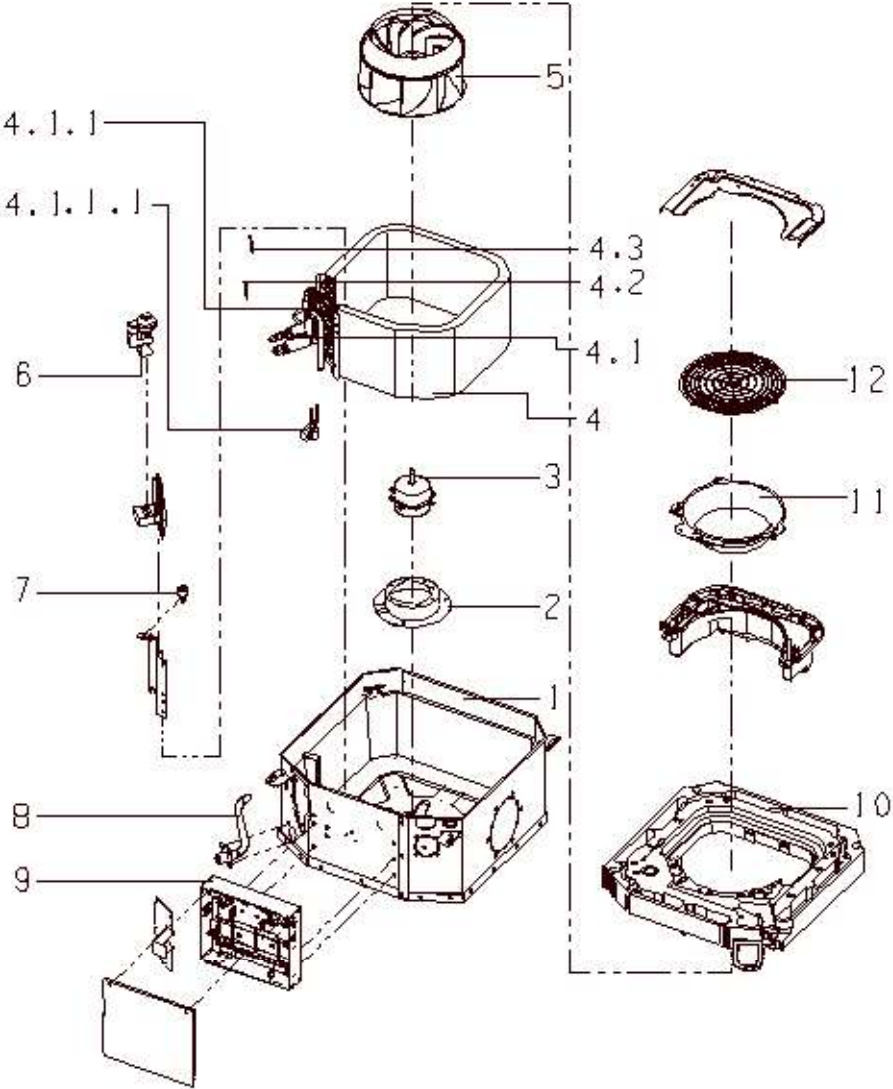


Exploded Views and Parts Listing

Indoor Unit Model: BECM005Q3A-D

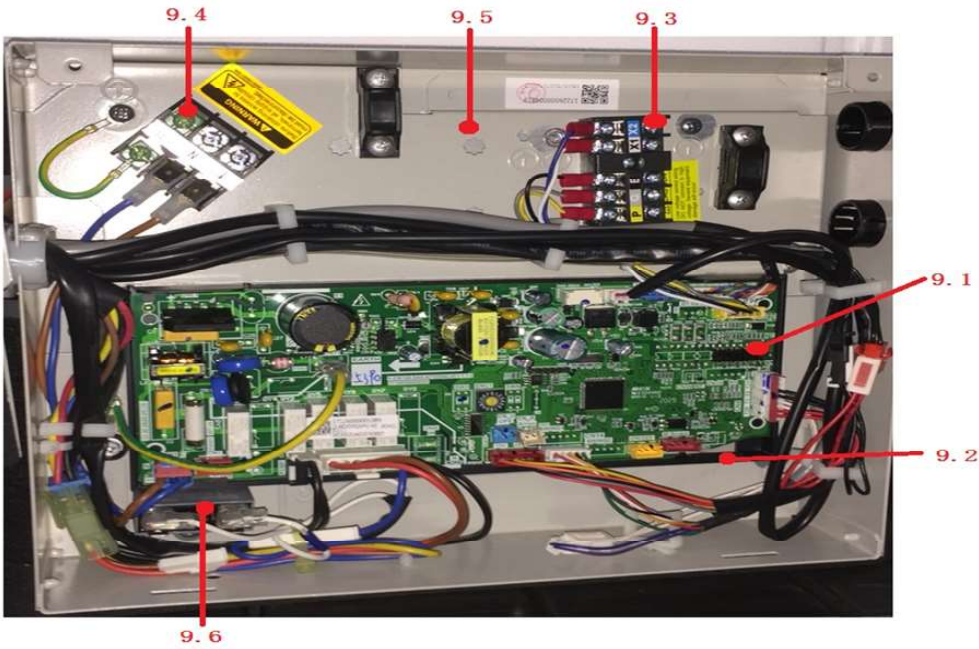
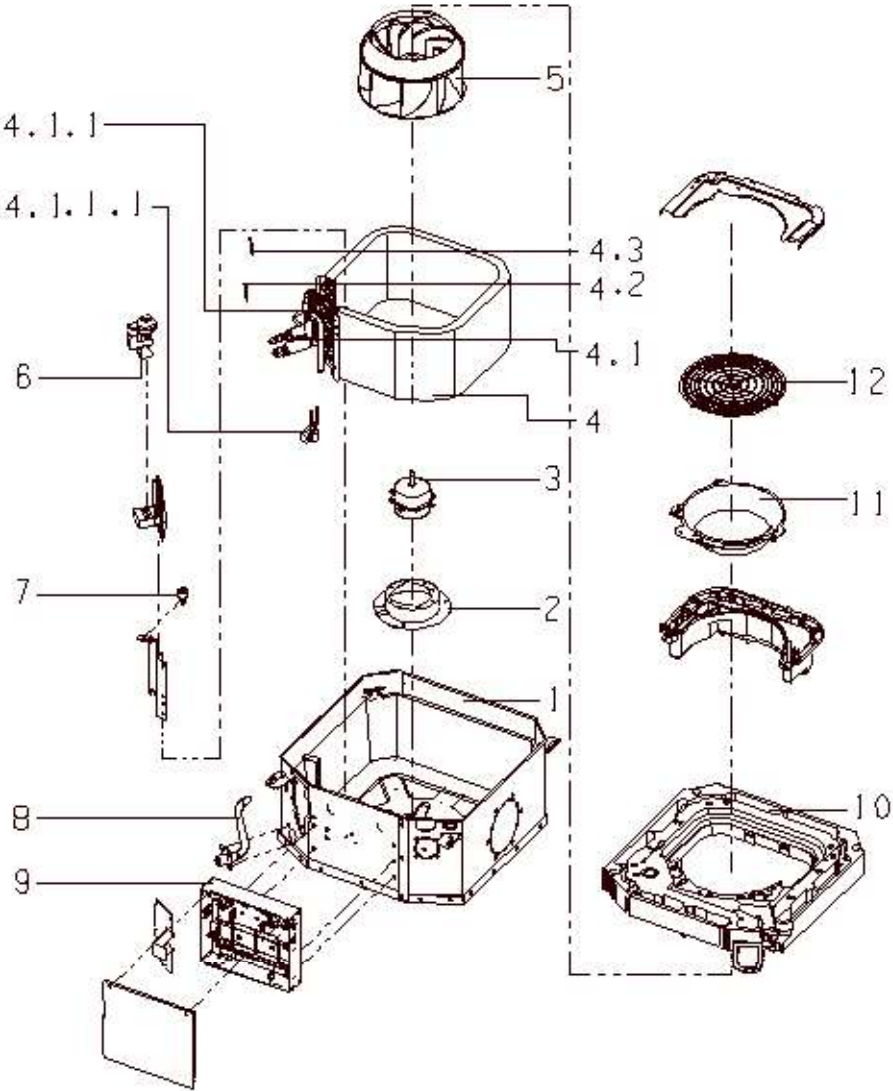


Model: BECM005Q3A-D

No.	Part Name	Part No.
1	Chassis assembly	12226000004178
2	Fan motor base	12222500000198
3	Single phase asynchronous motor	11002012005681
4	Evaporator assembly	15826000003132
4.1	Evaporator input pipe assembly	15426000002336
4.1.1	Evaporator input pipe assembly	15426000002337
4.1.1	Evaporator input pipe assembly	15426000001557
4.1.1.1	Electronic expansion valve suite	15500213000909
4.2	Pipe Temperature Sensor	11201007003022
4.3	Pipe Temperature Sensor	11201007000070
5	centrifuge fan	12100103000076
6	Water pump	17400802000171
7	Water Level Switch	17400511000036
8	Drain pipe ass'y	12626000000063
9	E-part box assembly	17226000004839
9.1	Indoor unit main control board	17126000A04782
9.2	Installation board	12126000000337
9.3	Wire joint	17400401001516
9.4	Wire joint	17400401000188
9.5	Electric control box welding assembly	12226000004098
9.6	Capacitor	17400101000120
10	Water collector assembly	12822500000018
11	Ventilation ring	12122500000419
12	Net	12222500000064

Exploded Views and Parts Listing

Indoor Unit Model: BECM008Q3A-D

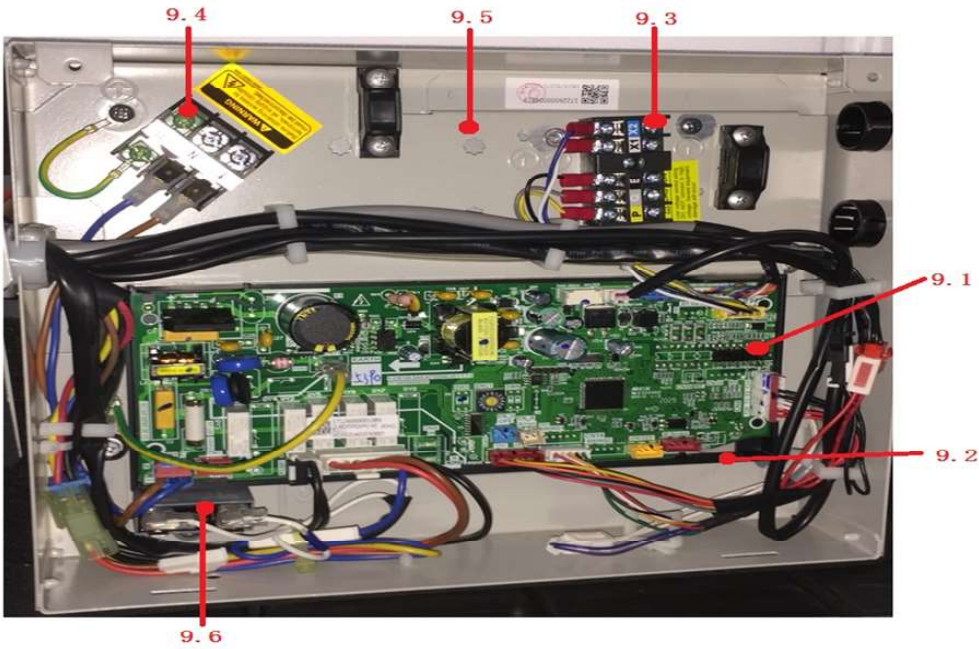
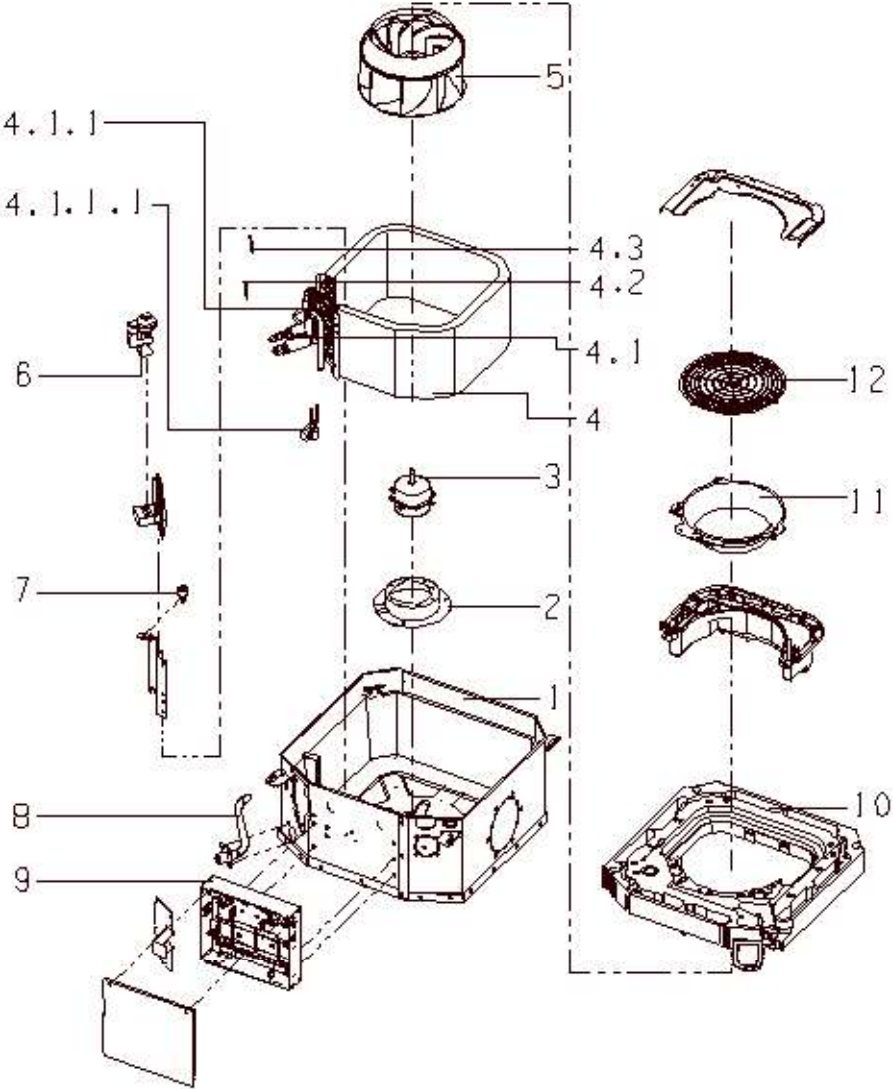


Model: BECM008Q3A-D

No.	Part Name	Part No.
1	Chassis assembly	12226000004178
2	Fan motor base	12222500000198
3	Single phase asynchronous motor	11002012005681
4	Evaporator assembly	15826000003132
4.1	Evaporator input pipe assembly	15426000002336
4.1.1	Evaporator input pipe assembly	15426000002337
4.1.1	Evaporator input pipe assembly	15426000001557
4.1.1.1	Electronic expansion valve suite	15500213000909
4.2	Pipe Temperature Sensor	11201007003022
4.3	Pipe Temperature Sensor	11201007000070
5	centrifuge fan	12100103000076
6	Water pump	17400802000171
7	Water Level Switch	17400511000036
8	Drain pipe ass'y	12626000000063
9	E-part box assembly	17226000004839
9.1	Indoor unit main control board	17126000A04782
9.2	Installation board	12126000000337
9.3	Wire joint	17400401001516
9.4	Wire joint	17400401000188
9.5	Electric control box welding assembly	12226000004098
9.6	Capacitor	17400101000120
10	Water collector assembly	12822500000018
11	Ventilation ring	12122500000419
12	Net	12222500000064

Exploded Views and Parts Listing

Indoor Unit Model: BECM010Q3A-D

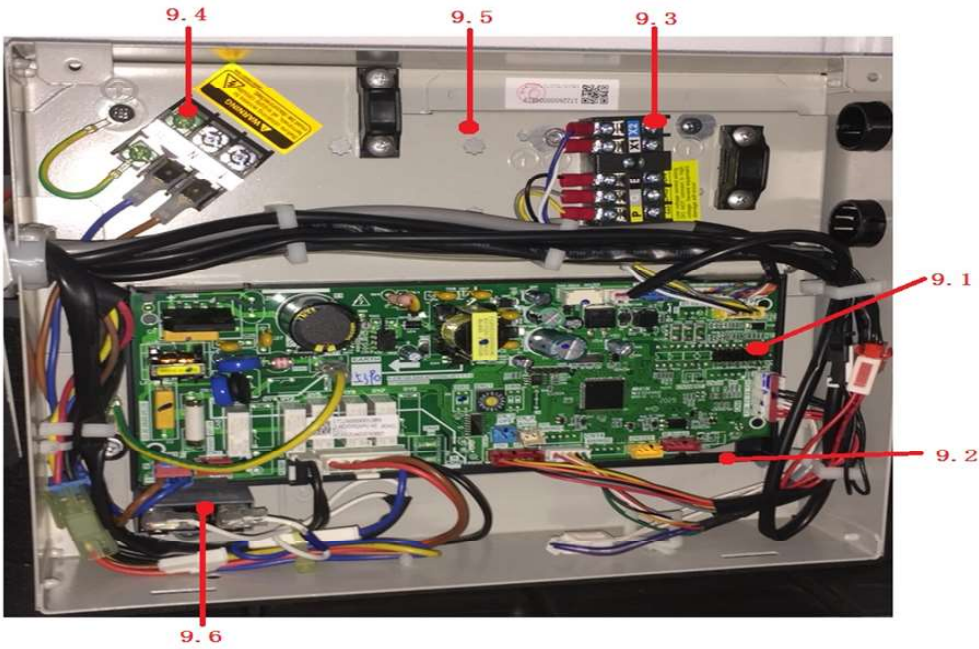
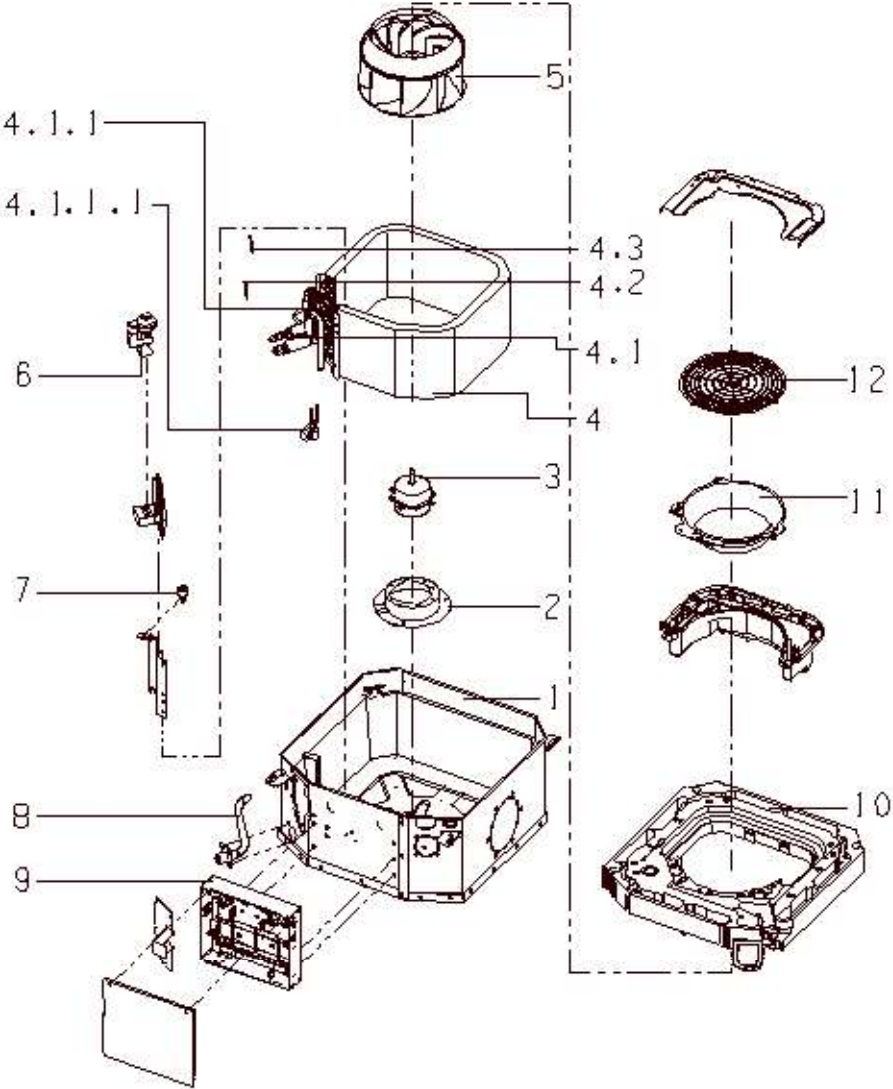


Model: BECM010Q3A-D

No.	Part Name	Part No.
1	Chassis assembly	12226000004178
2	Fan motor base	12222500000198
3	Single phase asynchronous motor	11002012005681
4	Evaporator assembly	15826000003132
4.1	Evaporator input pipe assembly	15426000002336
4.1.1	Evaporator input pipe assembly	15426000002337
4.1.1	Evaporator input pipe assembly	15426000001557
4.1.1.1	Electronic expansion valve suite	15500213000909
4.2	Pipe Temperature Sensor	11201007003022
4.3	Pipe Temperature Sensor	11201007000070
5	centrifuge fan	12100103000076
6	Water pump	17400802000171
7	Water Level Switch	17400511000036
8	Drain pipe ass'y	12626000000063
9	E-part box assembly	17226000004839
9.1	Indoor unit main control board	17126000A04782
9.2	Installation board	12126000000337
9.3	Wire joint	17400401001516
9.4	Wire joint	17400401000188
9.5	Electric control box welding assembly	12226000004098
9.6	Capacitor	17400101000120
10	Water collector assembly	12822500000018
11	Ventilation ring	12122500000419
12	Net	12222500000064

Exploded Views and Parts Listing

Indoor Unit Model: BECM012Q3A-D

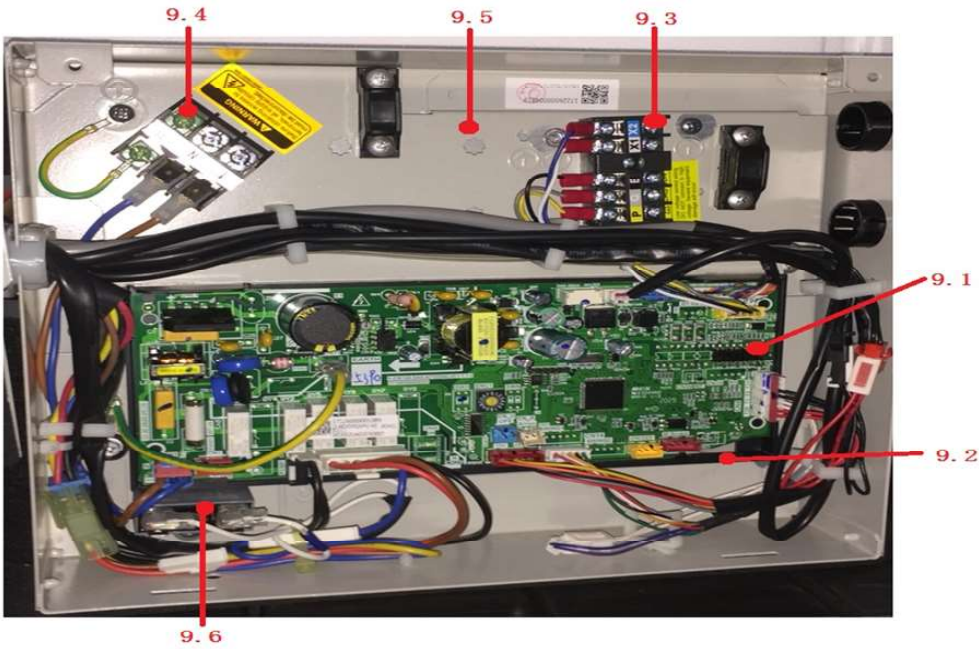
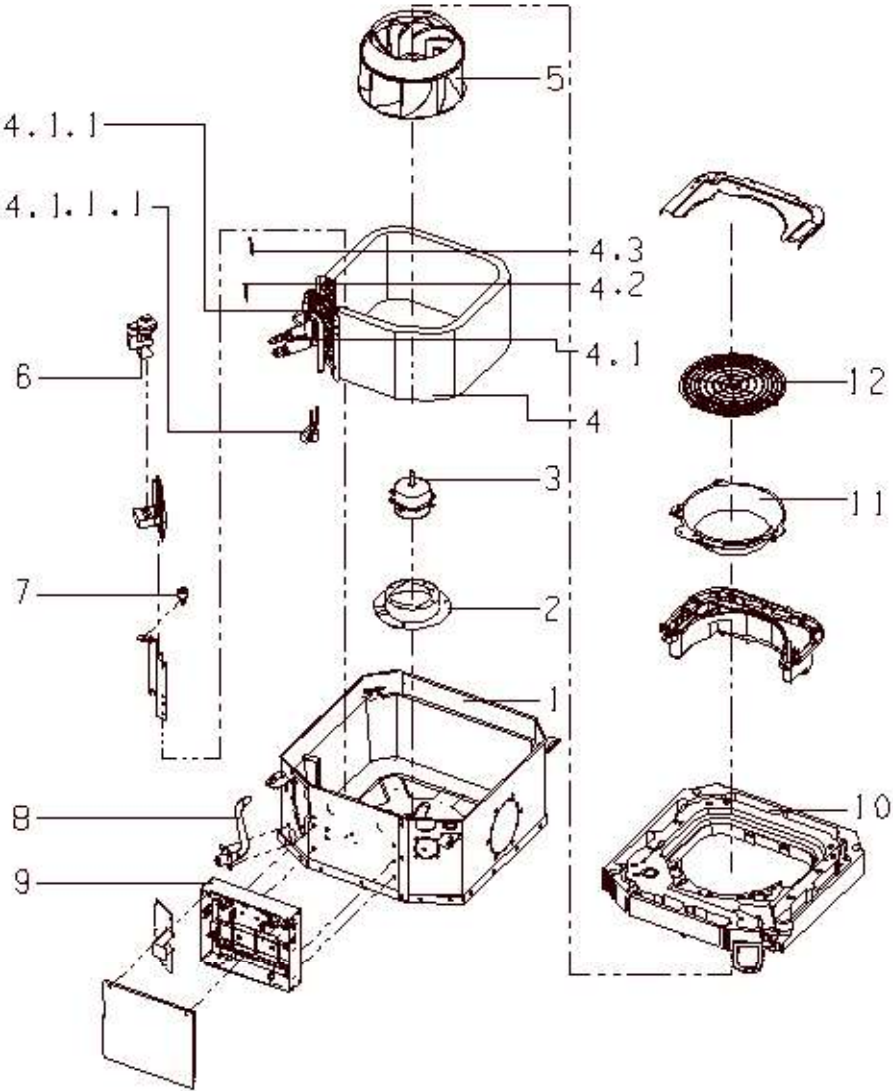


Model: BECM012Q3A-D

No.	Part Name	Part No.
1	Chassis assembly	12226000004178
2	Fan motor base	12222500000198
3	Single phase asynchronous motor	11002012005682
4	Evaporator assembly	15826000003134
4.1	Evaporator input pipe assembly	15426000002338
4.1.1	Evaporator input pipe assembly	15426000002337
4.1.1	Evaporator input pipe assembly	15426000001559
4.1.1.1	Electronic expansion valve suite	15500213000909
4.2	Pipe Temperature Sensor	11201007003022
4.3	Pipe Temperature Sensor	11201007000070
5	centrifuge fan	12100103000076
6	Water pump	17400802000171
7	Water Level Switch	17400511000036
8	Drain pipe ass'y	12626000000063
9	E-part box assembly	17226000004819
9.1	Indoor unit main control board	17126000A04782
9.2	Installation board	12126000000337
9.3	Wire joint	17400401001516
9.4	Wire joint	17400401000188
9.5	Electric control box welding assembly	12226000004098
9.6	Capacitor of fan motor	17400101000050
10	Water collector assembly	12822500000018
11	Ventilation ring	12122500000419
12	Net	12222500000064

Exploded Views and Parts Listing

Indoor Unit Model: BECM015Q3A-D



Model: BECM015Q3A-D

No.	Part Name	Part No.
1	Chassis assembly	12226000004178
2	Fan motor base	12222500000198
3	Single phase asynchronous motor	11002012005682
4	Evaporator assembly	15826000003134
4.1	Evaporator input pipe assembly	15426000002338
4.1.1	Evaporator input pipe assembly	15426000002337
4.1.1	Evaporator input pipe assembly	15426000001559
4.1.1.1	Electronic expansion valve suite	15500213000909
4.2	Pipe Temperature Sensor	11201007003022
4.3	Pipe Temperature Sensor	11201007000070
5	centrifuge fan	12100103000076
6	Water pump	17400802000171
7	Water Level Switch	17400511000036
8	Drain pipe ass'y	12626000000063
9	E-part box assembly	17226000004819
9.1	Indoor unit main control board	17126000A04782
9.2	Installation board	12126000000337
9.3	Wire joint	17400401001516
9.4	Wire joint	17400401000188
9.5	Electric control box welding assembly	12226000004098
9.6	Capacitor of fan motor	17400101000050
10	Water collector assembly	12822500000018
11	Ventilation ring	12122500000419
12	Net	12222500000064