

OMEGA Ducted VRF Indoor Unit

SUBMITTAL DATA

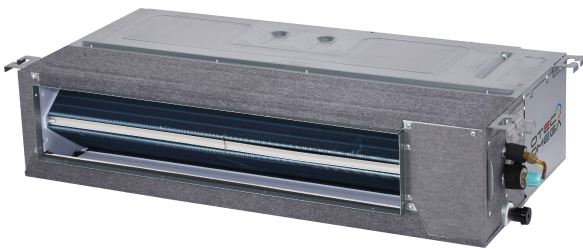
220-240V/1/50Hz

Job: _____
Location: _____
Schedule No.: _____
System Designation: _____

Engineer: _____
Architect: _____
Date: _____
For Reference Approval Review Construction

FEATURES

- Build in Drain Pump
- Auto Restart
- Water Overflow Protection
- Small Installation Space
- High-Efficiency DC Motor
- Flare Connections



BE (LP,MP) Series
Slim Horizontal Ducted IDU



BEHP Series
Horizontal Ducted IDU

Specifications

Model			BELP008Q3A-DCM022	BELP010Q3A-DCM028	BELP012Q3A-DCM036
Power supply			1 phase, 220-240V, 50Hz		
Cooling ¹	Capacity	kBtu/h	7	9	12
	Power input	W	57	57	61
Heating ²	Capacity	kBtu/h	8	10	13
	Power input	W	57	57	61
Fan motor	Type		AC		
	Number		1		
Indoor coil	Number of rows		2	2	2
	Tube pitch × row pitch	mm	21×13.37		
	Fin spacing	mm	1.5	1.5	1.5
	Fin type		Hydrophilic aluminum		
	Tube OD and type	mm	Φ7 Inner-groove		
	Dimensions (L×H ×W)	mm	515×147×26.74	515×147×26.74	515×147×26.74
	Number of circuits		3	3	3
Air flow rate(H/M/L)	m ³ /h	550/397/309	550/397/309	605/442/351	
Sound pressure level(H/M/L)	dB(A)	31/24/21	31/24/21	35/28/24	
Indoor external static pressure	Pa	10(0~30)	10(0~30)	10(0~30)	
Indoor unit	Net dimensions (W×H×D)	mm	778×210×500		
	Packed dimensions(W×H×D)	mm	870×285×525		
	Net/Gross weight	kg	18.5/22.2	18.5/22.2	18.5/22.2
Refrigerant type			R410A		
Pipe connections	Liquid/Gas pipe	mm	Φ6.35/ Φ12.7		
	Drain pipe	mm	OD Φ25		

Notes:

- Indoor temperature 27°C DB, 19°C WB; outdoor temperature 35°C DB; equivalent refrigerant piping length 7.5m with zero level difference.
- Indoor temperature 20°C DB; outdoor temperature 7°C DB, 6°C WB; equivalent refrigerant piping length 7.5m with zero level difference.

Specifications

Model			BELP015Q3A-DCM045	BELP019Q3A-DCM056	BEMP024Q3A-DCM071
Power supply			1 phase, 220-240V, 50Hz		
Cooling ¹	Capacity	kBtu/h	15	19	24
	Power input	W	98	103	140
Heating ²	Capacity	kBtu/h	17	21	27
	Power input	W	98	103	140
Fan motor	Type		AC		
	Number		1		
Indoor coil	Number of rows		2		
	Tube pitch × row pitch	mm	21×13.37		
	Fin spacing	mm	1.3		
	Fin type		Hydrophilic aluminum		
	Tube OD and type	mm	Φ7 Inner-groove		
	Dimensions (L×H×W)	mm	734×147×26.74	734×147×26.74	953×147×26.74
	Number of circuits		6		
Air flow rate(H/M/L)		m ³ /h	800/573/479	800/573/479	985/738/630
Sound pressure level(H/M/L)		dB(A)	36/29/26	36/29/27	36/30/27
Indoor external static pressure		Pa	10(0~30)	10(0~30)	10(0~30)
Indoor unit	Net dimensions (W×H×D)	mm	997x210x500	997x210x500	1218x210x500
	Packed dimensions (W×H×D)	mm	1115×285×525	1115×285×525	1335×285×525
	Net/Gross weight	kg	22.5/26.8	22.5/26.8	28/33
Refrigerant type			R410A		
Pipe connections	Liquid/Gas pipe	mm	Φ6.35/ Φ12.7	Φ9.53/Φ15.9	Φ9.53/Φ15.9
	Drain pipe	mm	OD Φ25		

Notes:

- Indoor temperature 27°C DB, 19°C WB; outdoor temperature 35°C DB; equivalent refrigerant piping length 7.5m with zero level difference.
- Indoor temperature 20°C DB; outdoor temperature 7°C DB, 6°C WB; equivalent refrigerant piping length 7.5m with zero level difference.

Specifications

Model			BEMP027Q3A-DCM080	BEMP031Q3A-DCM090	BEMP038Q3A-DCM112
Power supply			1 phase, 220-240V, 50Hz		
Cooling ¹	Capacity	kBtu/h	27	30	38
	Power input	W	198	200	313
Heating ²	Capacity	kBtu/h	30	34	42
	Power input	W	198	200	313
Fan motor	Type		AC		
	Number		1		
Indoor coil	Number of rows		4	4	4
	Tube pitch × row pitch	mm	21×13.5	21×13.5	21×13.5
	Fin spacing	mm	1.5	1.5	1.5
	Fin type		Hydrophilic aluminum		
	Tube OD and type	mm	Φ7 Inner-groove		
	Dimensions (L×H×W)	mm	955×336×53.5	955×336×53.5	955×336×53.5
	Number of circuits		5	8	8
Air flow rate(H/M/L)	m ³ /h	1345/1165/1013	1345/1165/1013	1800/1556/1400	
Sound pressure level(H/M/L)	dB(A)	45/40/37	45/40/37	48/42/38	
*Indoor external static pressure	Pa	20(10~50)	20(10~50)	40(10~80)	
Indoor unit	Net dimensions (W×H×D)	mm	1230×270×775	1230×270×775	1230×270×775
	Packed dimensions (W×H×D)	mm	1355×350×795	1355×350×795	1355×350×795
	Net/Gross weight	kg	35.5/41.5	36/42	36/42
Refrigerant type			R410A		
Pipe connections	Liquid/Gas pipe	mm	Φ9.53/Φ15.9		
	Drain pipe	mm	OD Φ25		

Notes:

- Indoor temperature 27°C DB, 19°C WB; outdoor temperature 35°C DB; equivalent refrigerant piping length 7.5m with zero level difference.
- Indoor temperature 20°C DB; outdoor temperature 7°C DB, 6°C WB; equivalent refrigerant piping length 7.5m with zero level difference.

*This is the available static pressure range which means the unit can run stably in this static pressure range, and the optimal static pressure range please refers to the Installation Manual. When choosing any static pressure which is out of optimal static pressure range, risk like bigger noise, lower air flow volume etc. should be considered in advanced.

Specifications

Model			BEMP048Q3A-DCM140	BEHP060Q3A-DCM160
Power supply			1 phase, 220-240V, 50Hz	
Cooling ¹	Capacity	kBtu/h	47	54
	Power input	W	274	940
Heating ²	Capacity	kBtu/h	52	58
	Power input	W	274	940
Fan motor	Type		AC	
	Number		1	
Indoor coil	Number of rows		4	4
	Tube pitch × row pitch	mm	21×13.5	25.4×22
	Fin spacing	mm	1.5	1.6
	Fin type		Hydrophilic aluminum	
	Tube OD and type	mm	Φ7 Inner-groove	
	Dimensions (L×H×W)	mm	1030×378×53.5	996×355.6×88
	Number of circuits		8	7
Air flow rate(H/M/L)		m ³ /h	1905/1636/1400	2875/2587/2383
Sound pressure level(H/M/L)		dB(A)	48/43/39	52/50/48
*Indoor external static pressure		Pa	40(10~100)	50(50~ 196)
Indoor unit	Net dimensions (W×H×D)		1290×300×865	1322×423×691
	Packed dimensions (W×H×D)		1400×375×925	1436×450×768
	Net/Gross weight		46.5/55.5	67/73
Refrigerant type			R410A	
Pipe connections	Liquid/Gas pipe	mm	Φ9.53/Φ15.9	
	Drain pipe	mm	OD Φ25	

Notes:

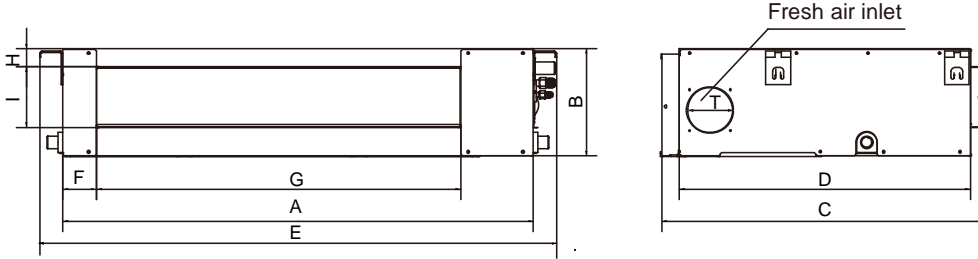
- Indoor temperature 27°C DB, 19°C WB; outdoor temperature 35°C DB; equivalent refrigerant piping length 7.5m with zero level difference.
- Indoor temperature 20°C DB; outdoor temperature 7°C DB, 6°C WB; equivalent refrigerant piping length 7.5m with zero level difference.

*This is the available static pressure range which means the unit can run stably in this static pressure range, and the optimal static pressure range please refers to the Installation Manual. When choosing any static pressure which is out of optimal static pressure range, risk like bigger noise, lower air flow volume etc. should be considered in advanced.

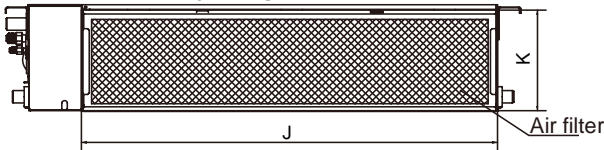
DIMENSIONAL DRAWINGS - (MM)

Horizontal Ducted dimensions unit:(mm)

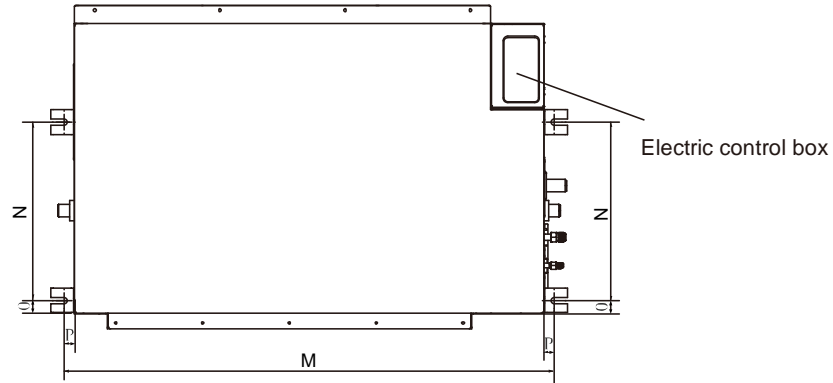
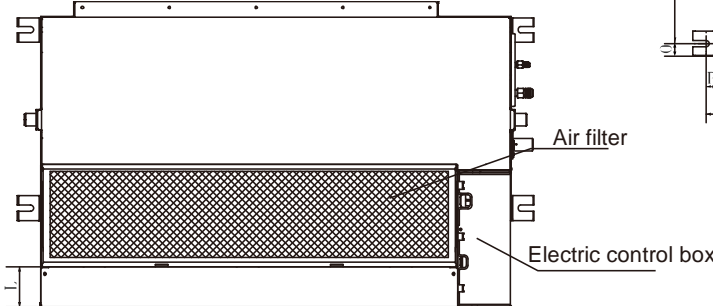
External dimensions and size of air outlet opening:



Size of air inlet opening (air intake from rear):



Size of air inlet opening (air intake from below):



Distance between the lugs:

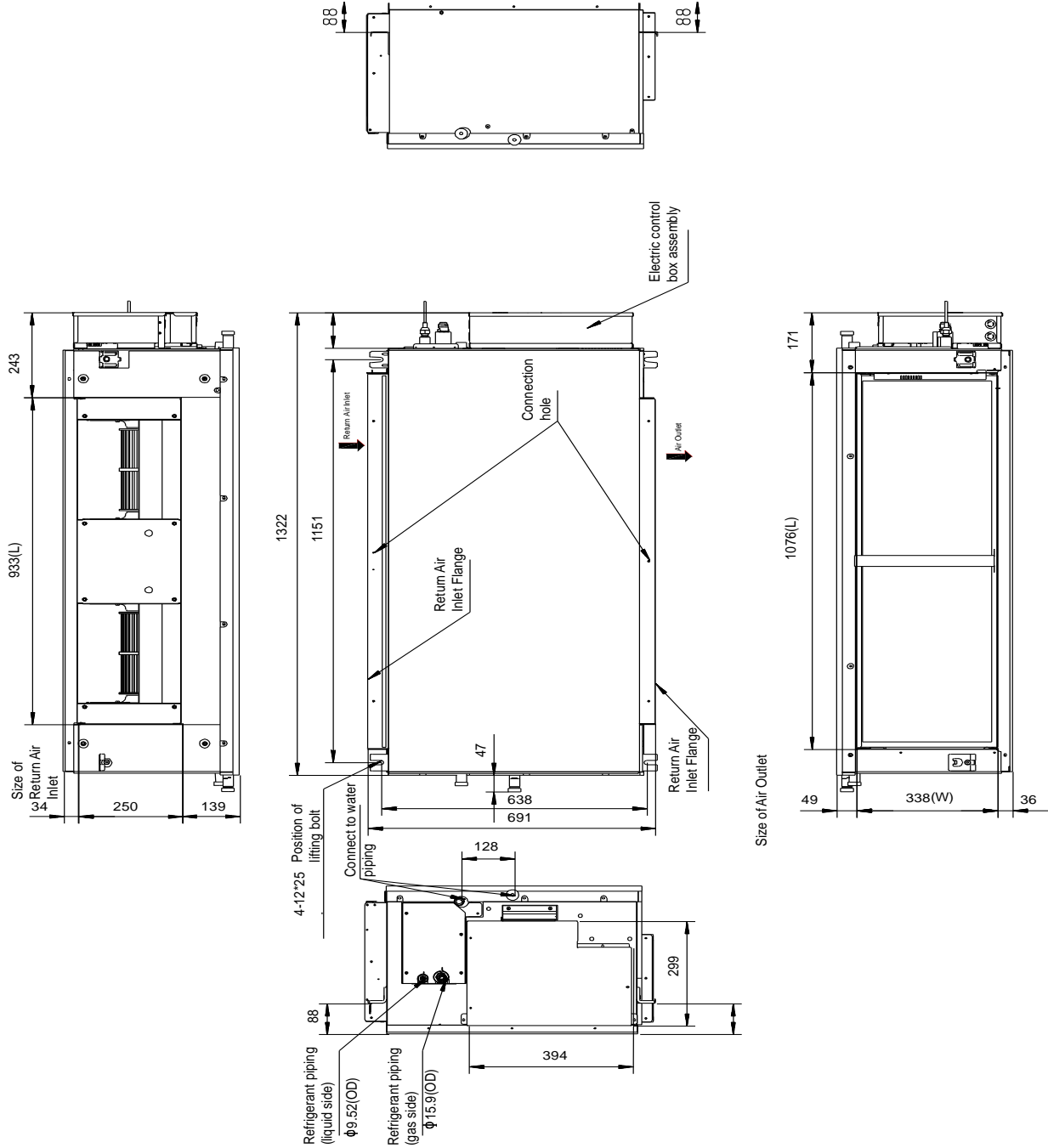
Table 2.1: 7.0-48.0kBtu/h Medium Static Pressure Duct External dimensions and size of air outlet opening (unit: mm)

Model names	External dimensions (mm)					Size of air outlet opening (mm)			
	A	B	C	D	E	F	G	H	I
BELP008/010/012	700	210	450	500	512	45	145	17	600
BELP015/019	920	210	450	500	512	45	145	17	820
BEMP024	1140	210	450	500	512	45	145	17	1040
BEMP027/031/038	1140	270	775	710	1230	65	933	35	179
BEMP048	1200	300	865	800	1290	80	968	40	204

Horizontal Ducted dimensions (unit: mm)

Model names	Size of air inlet opening (mm)			Spacing between lugs (mm)				Fresh air inlet diameter
	J	K	L	M	N	O	P	
BELP008/010/012	600	196	-	740	350	35	20	Φ92
BELP015/019	820	200	-	960	350	35	20	Φ92
BEMP024	1040	200	-	1180	350	35	20	Φ92
BEMP027/031/038	1035	260	20	1180	490	26	20	Φ125
BEMP048	1094	288	45	1240	500	26	20	Φ125

Model: BEMP060 Medium Static Pressure Duct dimensions (unit: mm)



Electrical Characteristics

Model name	Power supply						Indoor fan motors	
	Hz	Volts	Min. volts	Max. volts	MCA	MFA	Rated motor output (kW)	FLA
BELP008N3A-DCM022	50	220-240	198	264	0.3	15	0.03	0.2
BELP019N3A-DCM056	50	220-240	198	264	0.3	15	0.03	0.2
BELP024N3A-DCM071	50	220-240	198	264	0.3	15	0.03	0.2
BELP015N3A-DCM046	50	220-240	198	264	0.4	15	0.03	0.3
BELP019N3A-DCM056	50	220-240	198	264	0.4	15	0.03	0.3
BEMP024N3A-DCM071	50	220-240	198	264	0.6	15	0.06	0.5
BEMP027N3A-DCM080	50	220-240	198	264	1.0	15	0.15	0.8
BEMP031N3A-DCM090	50	220-240	198	264	1.0	15	0.15	0.8
BEMP038N3A-DCM112	50	220-240	198	264	1.3	15	0.15	1.0
BEMP048N3A-DCM140	50	220-240	198	264	1.6	15	0.24	1.3
BEHP060N3A-DCM160	50	220-240	198	264	4.7	15	0.56	3.8

Abbreviations:

MCA: Minimum Circuit Amps

MFA: Maximum Fuse Amps

FLA: Full Load Amps